

Universal Orlando Highlights One-Day/Two-Park Plan without Early Entry PART 1

[Home](#) » [Universal Studios Florida](#) » [Touring Plans](#) » [Adults](#) » Universal Orlando Highlights One-Day/Two-Park Plan without Early Entry PART 1

>>

Universal Orlando Highlights One-Day/Two-Park Plan without Early Entry PART 1

This is a Premium Touring Plan

You can copy this plan to a new personalized plan, which you can then modify and optimize to suit your needs.

Copy This Plan!

This plan is published.

Share this link with anyone you want to view this plan:

<https://touringplans.com/plans/print?id=954686>

Park:

Universal Studios Florida

Plan Summary:

This plan covers The Wizarding World of Harry Potter and other major attractions in both Universal Orlando parks. Requires a Park-to-Park ticket.

Additional Notes:

Purchase your admission in advance and call 407-363-8000 the day before your visit for the official opening time. Arrive at Universal Studios Florida 30-45 minutes before official park opening and line up at the shortest open turnstile queue. Check if any rides or shows are closed, and adjust touring plan.

Alternative Plan (if USF does not offer Early Park Admission): USF may open up to 30 minutes before official opening. Immediately ride Despicable Me, then continue with the remainder of this plan.

The following two plans comprise the "Universal Orlando Highlights One-Day/Two-Park" tour without Early Entry:

This Plan (Part 1, at USF)
[Part 2 \(at IOA\)](#)

Plan Steps

STEP

Despicable Me: Minion Mayhem

Hollywood Rip Ride Rockit

Transformers: The Ride-3D

Revenge of the Mummy

MEN IN BLACK Alien Attack

The Simpsons Ride

E.T. Adventure

Hogwarts Express - King's Cross Station

Take the Hogwarts Express to Islands of Adventure (park-to-park-ticket required)

Tour Islands of Adventure

Tour Islands of Adventure Tour Islands of Adventure using Part 2 of this plan, then return to Universal Studios Florida and resume at the following step.

Hogwarts Express - Return Trip to King's Cross**Universal Orlando's Horror Make-Up Show**

If the remaining Horror Makeup showtimes are not convenient, substitute with Terminator 2:3-D

Harry Potter and the Escape from Gringotts

Be aware that the Gringotts queue may close before the rest of the park if the wait time exceeds remaining operating hours.

Ollivanders**Leaky Cauldron****Diagon Alley**

Tour Diagon Alley. Explore Borgin & Burkes and the other dark recesses of Knockturn Alley. Tour the Weasley's Wizarding Wheezes, Magical Menagerie, and Madam Malkin's Robes for All Occasions shops. If you're hungry, try the Leaky Cauldron or Florean Forescue's ice cream parlor.

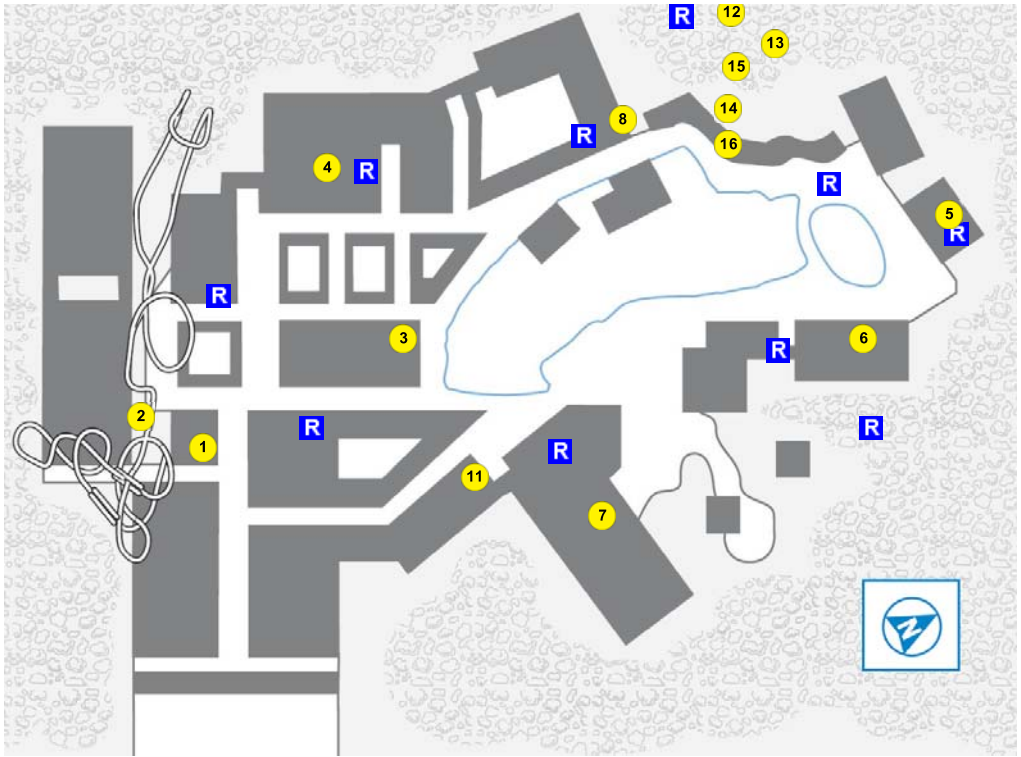
Knight Bus

Chat with the Knight Bus conductor and his shrunken heads outside of Diagon Alley. Also look for Kreacher in the window of 12 Grimmauld Place, and dial 62442 (MAGIC) in the red telephone booth.

Universal's Cinematic Spectacular - 100 Years of Movie Memories**Optimize or Evaluate?**

Happy with your plan? Click here, and we'll provide you with a print-optimized version of your custom touring plan.

**View &
Print**



[Blog](#) | [FAQ](#) | [Terms of Use & Privacy Policy](#) | [Team](#) | [Free Subscriptions](#) | [Travel Professionals](#) | [Jobs](#) | [Contact Us](#)

Universal Orlando Highlights One-Day/Two-Park Plan without Early Entry PART 2

[Home](#) » [Universal's Islands of Adventure](#) » [Touring Plans](#) » [Adults](#) » Universal Orlando Highlights One-Day/Two-Park Plan without Early Entry PART 2

>>

Universal Orlando Highlights One-Day/Two-Park Plan without Early Entry PART 2

This is a Premium Touring Plan

You can copy this plan to a new personalized plan, which you can then modify and optimize to suit your needs.

[Copy This Plan!](#)

Park:

Universal's Islands of Adventure

Plan Summary:

This plan covers The Wizarding World of Harry Potter and other major attractions in both Universal Orlando parks. Requires a Park-to-Park ticket.

Additional Notes:

This is Part 2 of the Universal Orlando Highlights 1-Day/2-Park plan. Use this plan upon entering Islands of Adventure, and select "Hogwarts Express Arrival." Set your plan start time to the Hogwarts Express departure time as determined by Part 1. Resume the other part upon returning to Universal Studios Florida.

The following two plans comprise the "Wizarding World One-Day/Two-Park" tour without Early Entry:

[Part 1 at USF](#)

This Plan (Part 2 at IOA)

Plan Steps

STEP

Dragon Challenge

Mythos Restaurant

Make a reservation through [OpenTable.com](#) for lunch at Mythos.

The Cat in the Hat

The Incredible Hulk Coaster

The Amazing Adventures of Spider-Man

Skull Island: Reign of Kong

Jurassic Park River Adventure

Flight of the Hippogriff

Harry Potter and the Forbidden Journey

If this is not your first ride on Forbidden Journey, use the single rider line. Alternatively, request a "castle tour" to experience the queue, then exit or ask to transfer to singles.

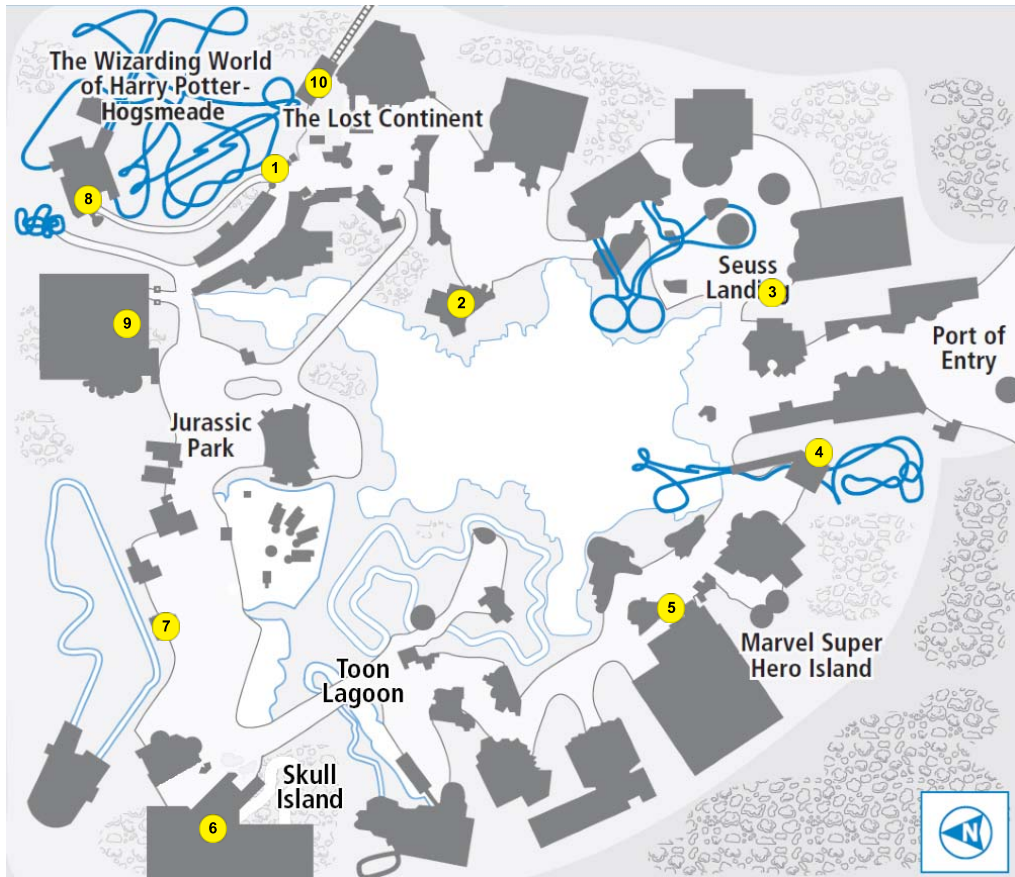
Hogwarts Express - Hogsmeade Station

Return to USF on the Hogwarts Express. If the "no re-ride" policy is being enforced, walk back to the other park. Resume using the second half of the other part of this plan.

Optimize or Evaluate?

Happy with your plan? Click here, and we'll provide you with a print-optimized version of your custom touring plan.

View & Print



[Blog](#) | [FAQ](#) | [Terms of Use & Privacy Policy](#) | [Team](#) | [Free Subscriptions](#) | [Travel Professionals](#) | [Jobs](#) | [Contact Us](#)